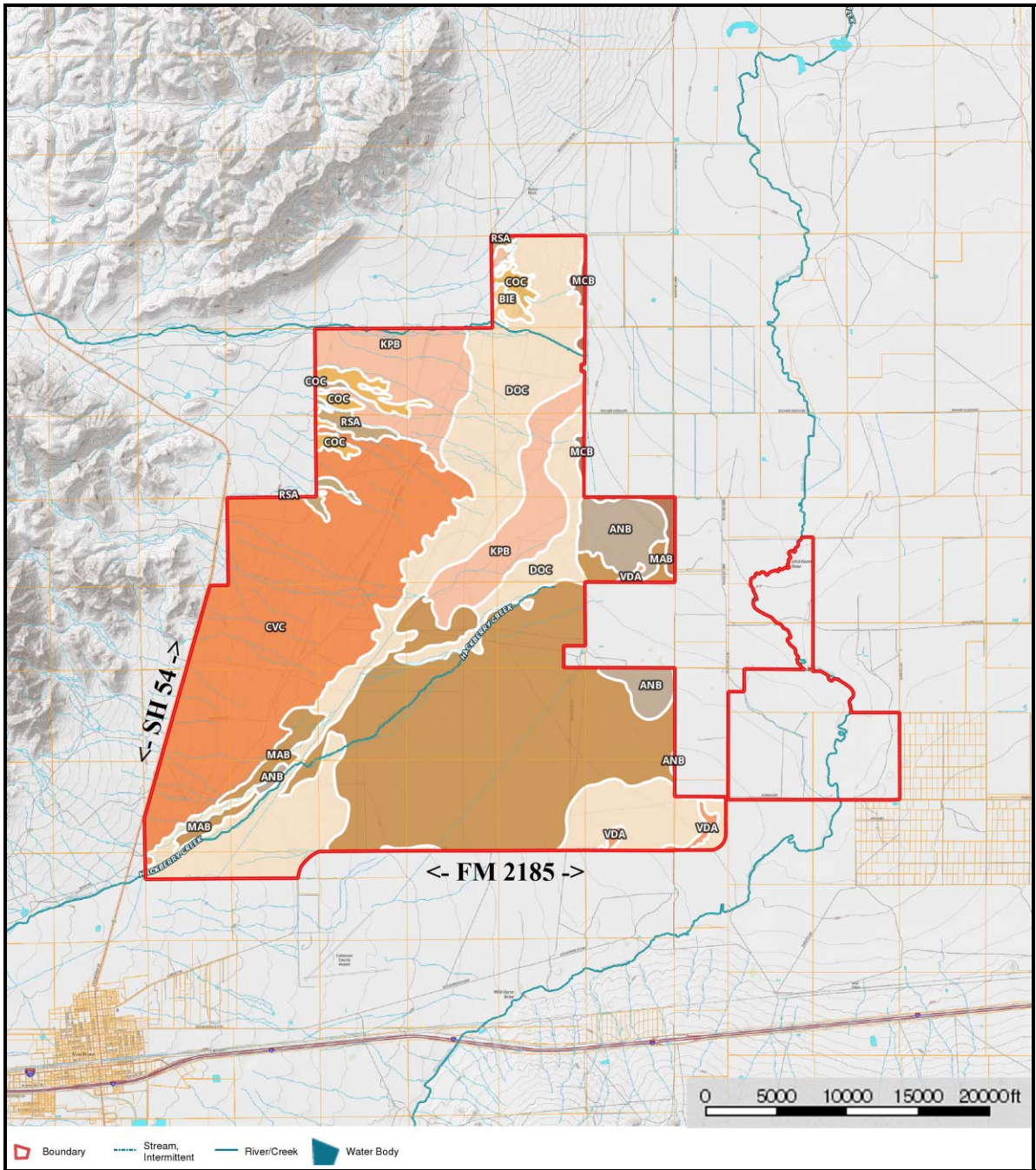


Soil Map



Boundary 19177.3 ac

SOIL CODE	SOIL DESCRIPTION	ACRES	%	CAP
RSA	Reyab silt loam, 0 to 2 percent slopes, occasionally flooded	203.6	1.06	6c
CVC	Culberspeth-Chilicotal complex, 1 to 8 percent slopes	4853.7	25.31	6s
DOC	Double loam, 1 to 8 percent slopes	5034.1	26.25	6c
COC	Chispa-Chilicotal complex, 1 to 8 percent slopes	317.6	1.66	7s
MCB	Michigan clay, 0 to 3 percent slopes	165.1	0.86	6c
ANB	Antbed loam, 0 to 3 percent slopes	701.9	3.66	6e
KPB	Kinco-Aguena-Perilla complex, 1 to 5 percent slopes	2011.7	10.49	6c
VDA	Verhalen-Dalby association, 0 to 1 percent slopes, rarely flooded	89.2	0.47	6c
BIE	Bissett-Rock outcrop complex, 10 to 30 percent slopes	77.2	0.4	7s
MAB	McAllister fine sandy loam, 0 to 3 percent slopes	5723.3	29.84	6c
TOTALS		19177.3	100%	6.02

